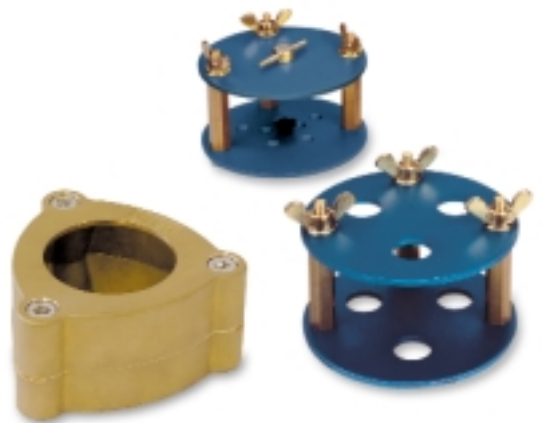


Küvette JST

JST Flask

Okklamat

Reline Jig



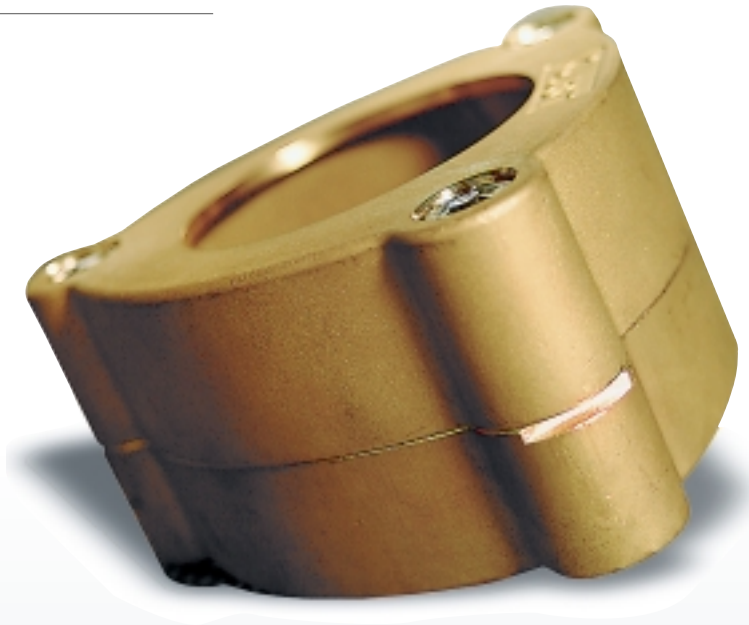
JST Flask

Developed in collaboration with MDT Jürg Stuck, this flask helps to achieve new dimensions in precision fitting full dentures. Because even after pressing, the teeth are still in exactly the positions where they were set. In addition, thick acrylic flash, raised bites and incorrectly pressed colour layers finally become a thing of the past.

This product is a totally new design concept. Instead of the conventional casting method, the 4mm thick brass material is formed into its unique triangular shape using the deep drawing process. A flask manufactured by this method shows significantly higher resistance and, in comparison with flasks made of castings, can withstand a higher number of pressing operations without deformation.

The most striking feature of the JST flask is the screw fit. Three solid Allen screws hold the two halves of the flask together, making the cumbersome flask clamp previously required superfluous. Tapered steel guides centre the flask sections as they are closed and ensure a gap-free fit between the upper and lower halves.

A number engraved across the two sections of the flask prevents confusion between different top and bottom sections and at the same time ensures that the two sections are correctly positioned in relation to one another.



Uniform heat transfer thanks to triangular shape

Benefits

- Top and bottom flask sections screw together with no clamp required
- Fits into any pressure pot
- Homogeneous material
- Uniform heat transfer thanks to triangular shape
- Generous inside diameter for large dentures
- High flask top section
- Conical inside surfaces to facilitate deflasking
- Tapered steel guides centre the flask sections as they are closed
- The serial number prevents confusion between the flask sections
- 5-year warranty against material failure*

Technical specifications

Top section: height 31 mm
Bottom section: height 25 mm

Order details

The JST flask is supplied complete with Allen key

* Warranty only applies in the case of proper use of the product.

This is how it works

using the JST flask with Candulor Aesthetic denture base material

1. Investment

Only use Grade IV plaster for investment so that the pressure is transmitted to the models with no losses. Position the model in the flask so that the approximal axes of the central incisors are at right angles to the plane of the flask (Fig. 1).

This means that no surface will be exposed to excessive pressure during the flasking operation, thus preventing possible damage to the anteriors. Centre the model and the anteriors in relation to one of the centring pins (Fig. 2).

Later on this will enable you to close the flask like a wedge by tightening the screws asymmetrically. Fill the upper section of the flask up to the lower edge for the first layering (Fig.3).



Fig. 1

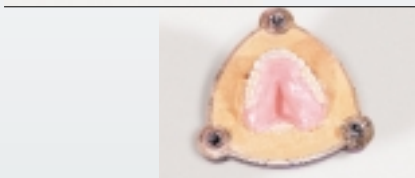


Fig. 2



Fig. 3

2. Boiling out and isolating

Heat the flask in a water bath prior to opening. Now drill an acrylic outflow channel all around the model at a distance of approx. 10mm from the edge of the flask (Fig. 4). This will allow you to collect the excess acrylic in a controlled manner during the flasking operation. The boiled out index keys must be warm (approx. 40 °C - 50 °C) and the plaster surfaces well wetted. Apply two coats of Candulor Iso-K separating liquid and allow the surfaces to dry thoroughly. To ensure proper bonding with the denture base material, roughen the teeth well and moisten with monomer.

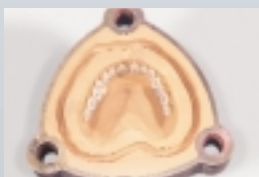


Fig. 4

3. Packing and polymerisation

With the Candulor Intensiv Colors mix up the gingiva shades required to colour the acrylic and apply this to the vestibular area of the flask using a brush (Fig. 5).

Now place the expanded acrylic in the flask and press it onto the characterised acrylic. To prevent incorrect pressing of the coloured layers, close the flask with a scissor-like movement so that the excess material is directed towards the back (dorsal end) (Fig. 6).

For the initial fastening, carefully tighten the screw adjacent to the front flange with the Allen key (Fig.7).

Load the JST flask under a press with a pressure of 80 bar and tighten all the screws. The cold or heat polymerisation can now begin.

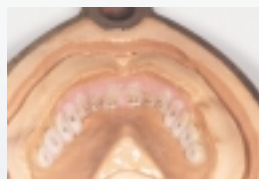


Fig. 5

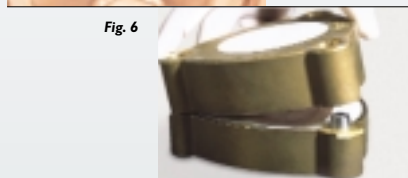


Fig. 6



Fig. 7

It is certainly no accident that the emphasis is placed on practical requirements when developing new Candulor products. The results speak for themselves, an exceptionally stunning, natural appearance. (Fig. 8).



Fig. 8

J. Stuck

Okklamat

Reline Jig

The Candulor "Okklamat" was specially developed for straightforward handling, a fact that is clearly reflected in its practical design concept. This reline device is manufactured exclusively from top-grade materials. The three-point fixing prevents the upper and lower plates from tilting. Conical pins ensure that the butterfly nuts automatically slide onto the thread, while the fine thread pitch provides secure closure of the Okklamat reline jig. And what's more, Candulor's well-known quality standard guarantees extremely precise results when using this device.

The Okklamat is available in a choice of two models to cover different applications:

Benefits

- The machined limiting step completely eliminates bite-raising.
- The small distance between plates keeps plaster consumption to a minimum.
- The compact size of the Okklamat is designed to fit into the Candulor pressure pot or any other pressure polymerisation device.

Applications

- All types of relining.

Technical specifications

Diameter: 110 mm

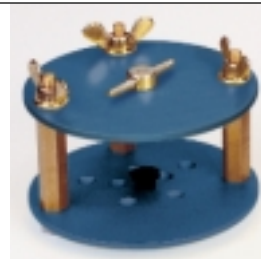
Height: 100 mm

Available models

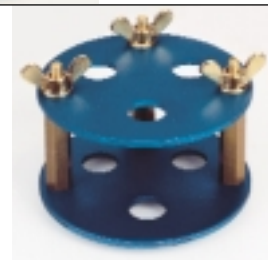
- Okklamat Type A
- Okklamat Type N



Type N
with central
retaining
screw



Type A
with retention
holes



Candulor

Kunst Zahn Werk

Candulor AG

CH-8602 Wangen/ZH, Pünten 4, Postfach 89
Tel. +41 (0)1.805.9000, Fax +41 (0)1.805.9090
www.candulor.com, candulor@candulor.ch

Candulor Dental GmbH

D-78239 Rielasingen-Worblingen, Am Riederngraben 6
Tel. +49 (0)7731.52075, Fax +49 (0)7731.28917
www.candulor.de, candulor@candulor.de

